

Protect Series Tripod Turnstile SUN CP-ME124-T SA

Fashion design, exquisite and durable!



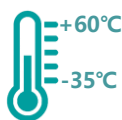


TECHNICAL SPECIFICATIONS

Gate Dimension	1430*250*1450mm (4.69*0.82*4.76ft) (standard)
Material	304 Stainless steel
Arm Material	Stainless steel
Passage Width	550mm (1.80ft)
Power Supply	100V-240V, 50/60Hz
Mechanism	Mold design With hydraulic damper
MCBF	5,000,000 Cycles
Communication	RS232/RS485
Open Signal	Passive Relay (Dry Contact)
Delayed access	Barrier will lock automatically within 5s (adjustable) if a person delay to access
Anti-pass back	The gate will lock when turn to 60degree to prevent reverse turn



PASSING SPEED



TEMPERATURE RAGE



BI-DIRECTION



POWER SUPPLY

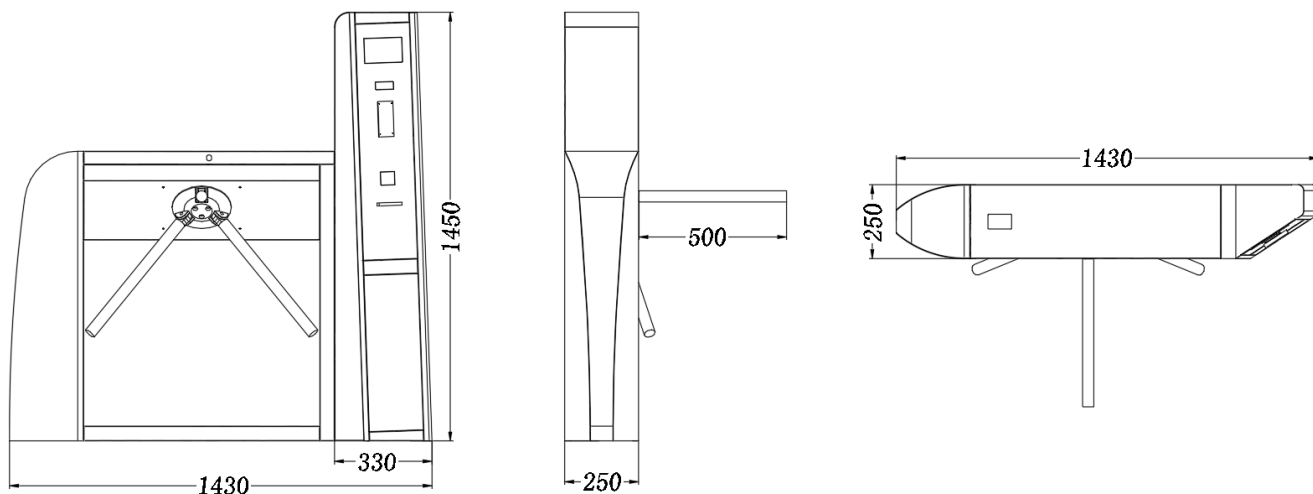


ANTI-TAILGATING



PROTECTIVE LEVEL

DIMENSIONS



**Gate size and lane width can be customized to site dimensions.*

ACCESS CONTROL

- ✓ The LCD display supports multi-device connection: computers, laptops, game consoles, TV boxes, Raspberry PI, industrial control motherboards, industrial equipment and other mainstream devices on the market.

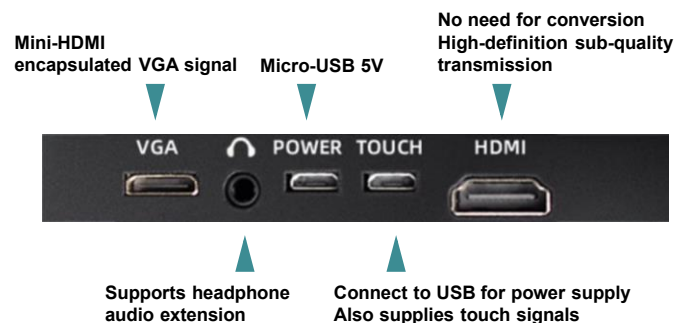


Right handed

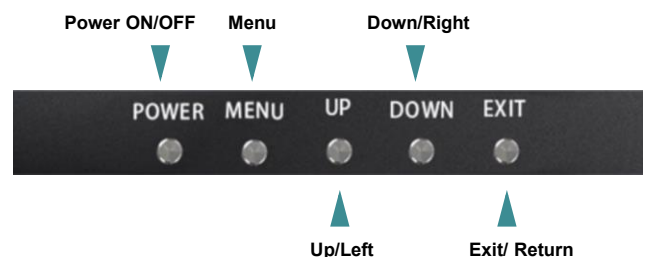
LCD DISPLAY SPECIFICATIONS

LCD Display Dimension	7 inch
Resolution	1024*600
Aspect ratio	16:9
Panel type	TN/IPS (optional)
Optional brightness	350nit
Refresh rate	60hz
Power supply mode	Micro-USB 5V
Material	Aluminium alloy
Interface	HDMI/VGA/Audio output

LCD Display Interface Description

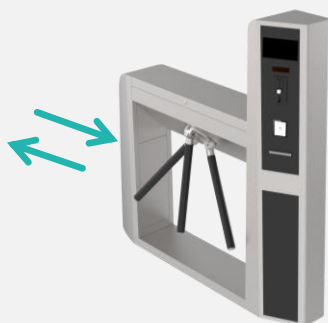


LCD Display Key Description



Left handed

EMERGENCY MODE



Emergency Mode

When power fails or emergency mode, tripod arms will drop arm automatically.



CUSTOMIZATION

LOGO can be customized

1. Logo can be printed on swipe card window. AI or CRD files required.
2. Logo can be printed on metal nameplates and attached to gates.



Chassis color can be customized

Supports paint coated or galvanized.
RGB, RAL or Pantone number required.



Black



Gray



Green



Gold



Woodgrain

Other customizable Options

- Gate dimensions can be customized according to the site.
- Material optional: 304 stainless steel, 316 stainless steel, iron with powder coated and galvanized (color can be customized).
- Tripod arm material available in stainless steel and power coated in galvanized steel
- LED colors can be customized.
- Swipe card icon can be cancelled.
- Customized 3D drawings are available based on the site photos.
- OEM&ODM service is available.

OPTIONAL ACCESSORIES



Mounting Base

Optional:

1. Mounting base (for above floor wiring) ;
2. Removable base with wheels (for temporary events);
3. 201 stainless steel with anti-slip texture;
4. Iron with black powder coated.

Barrier

Optional:

1. Acrylic barrier (Logo can be printed);
2. Stainless steel tube barrier;
3. 304/316 stainless steel;
4. Iron with black powder coated.



Control Panel

Buttons:

- Right/Left open
- Right/Left lock
- Right/Left free passage
- Emergency



www.bramkiobrotowe.eu

Email: office@cartpoland.pl

Tel: +48 795 183 316

Address: Wólka Mińska Ul. Olszowa 5 05-300
Poland