

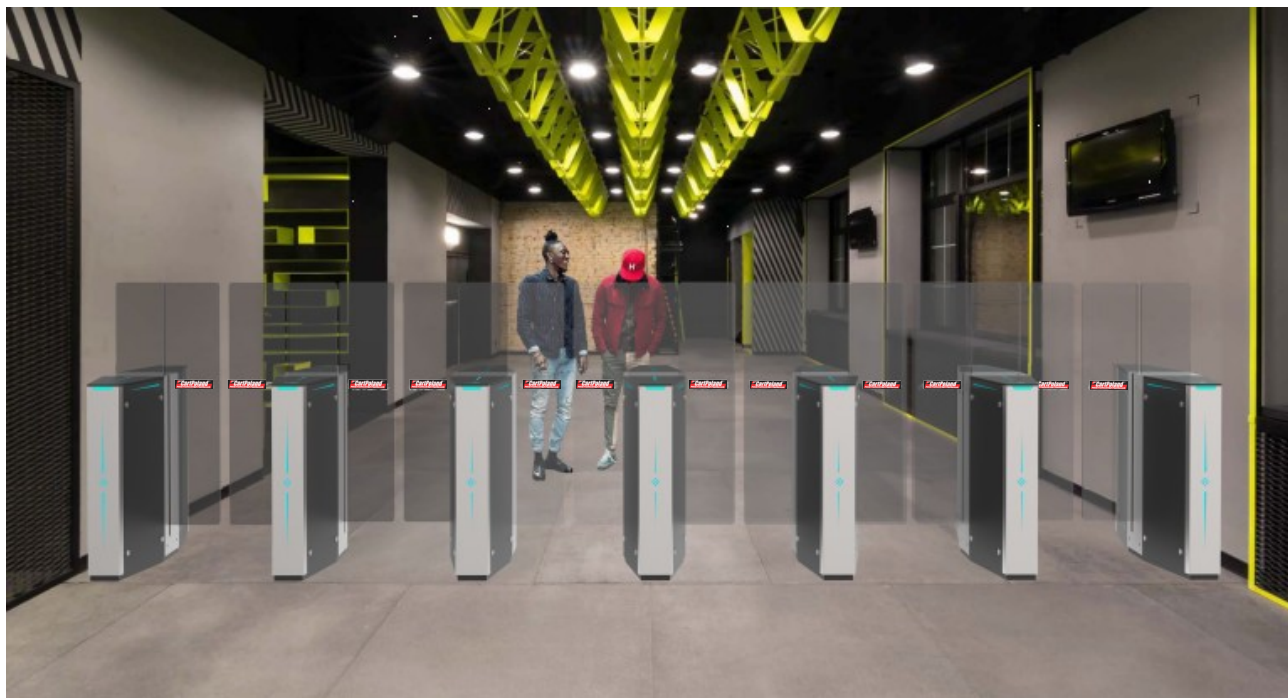


Product Brochure

Enhanced by meteor elements, fancy LED, high door, unique & distinctive casing design

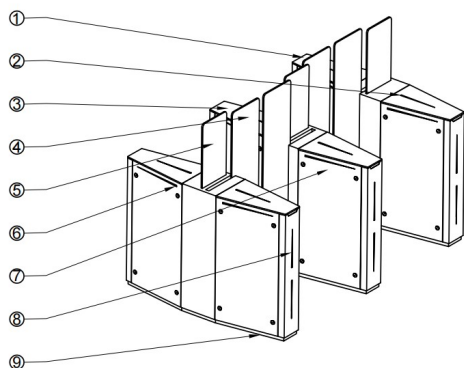
Sliding turnstile CP-LX227-P

PRODUCTION INTRODUCTION

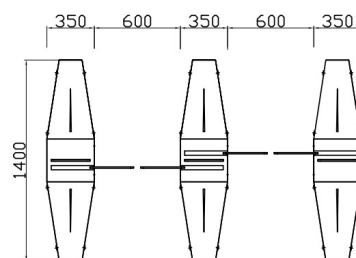


Fashionable& textured sliding turnstile gate with a tempered glass top cover that can be customized with different card swiping panels. The combination of painted black and stainless steel is also eye-catching. The stylish and atmospheric appearance makes itsuitable for almost any high-end venue without any sense of dissonance.

DIMENSIONS

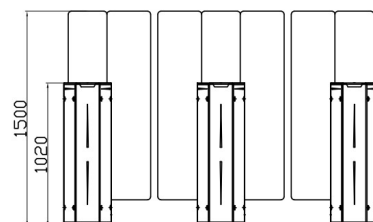
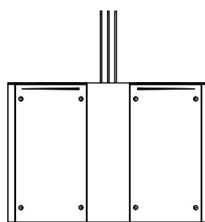


- ① Tempered glass Top Lid
- ② Direction Indicator
- ③ Acrylic CARD Window
- ④ Acrylic Silding Arm
- ⑤ Fixed barrier
- ⑥ Decorative LED
- ⑦ Side plate
- ⑧ Lane Status Indicator
- ⑨ Position of Fixing Screw



*Lane width 600mm&900mm available.

*If the lane width is 900mm, the chassis width is 500mm.



*Gate size and lane width can be customized to site dimensions.



www.bramkiobrotowe.pl



+48 795 183 316



office@cartpoland.pl

TECHNICAL SPECIFICATIONS

Gate Dimension	1400*350*1020mm (1.97*0.69*3.22ft) (standard)
Gate Material	1.5mm iron with powder coated
Swing arm Material	Acrylic flap with LED (standard), Tempered glass
Passage Width	600mm (1.97ft) -900mm(2.95ft)
Door height from ground	1500mm(4.92ft)
Power Supply	100V-240V, 50/60Hz
Mechanism	Servo motor mechanism
MCBF	10,000,000 Cycles
IR Sensor	6 pairs
Infrared sensor alarm	Illegal intrusion and reverse intrusion
Open Signal	Passive Relay (Dry Contact)
Communication	RS485/RS232
Working Temperature	-40°C ~ 70°C
Working Environment	Indoor and outdoor
Delayed access	Barrier will lock automatically within 5s (adjustable) if a person delay to access



PASSING SPEED



PASSAGE FOR DISABLE



BI-DIRECTION



POWER SUPPLY

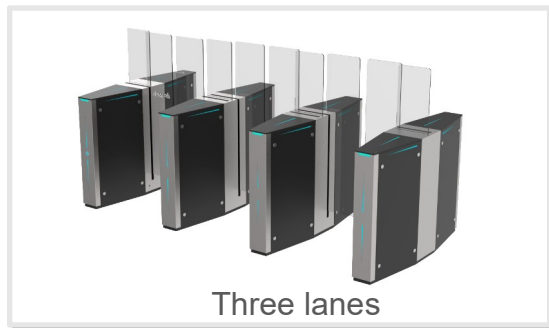
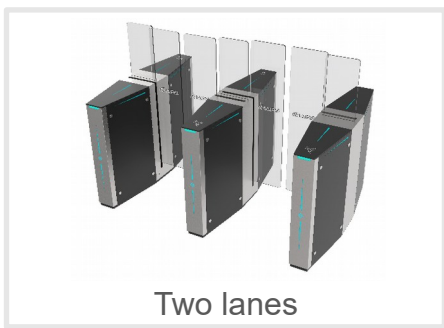


ANTI-TAILGATING



PROTECTIVE LEVEL

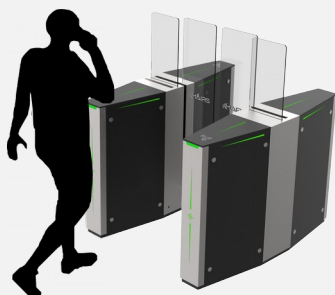
LANE COMBINATION



LED DISPLAY



The LED is **BLUE** when in standby mode and lane is available.



The LED is **GREEN** when the lane allows access.



The LED is **RED** when the lane is not available/ access declined.

EMERGENCY MODE



**Powered of equipment
with Super Capacitor Backup**

When power fails or emergency mode, ssiding arms will retract into the casing automatically.



CUSTOMIZATION

The cutout for readers can be customized

Provide us with the dimensions of the card reader/scanner or other access control reader and we will customize the cutout according to its dimensions.



LOGO can be customized

1. Logo can be printed on swing arm, acrylic decorative bar, swipe card window. AI or CRD files required.
2. Logo can be printed on metal nameplates and attached to gates.



Chassis color can be customized

Supports paint coated or galvanized.
RGB, RAL or Pantone number required.



Black



Gray



Green



Gold



Woodgrain

Other customizable Options

- Gate dimensions can be customized according to the site.
- Material optional: 304 stainless steel, 316 stainless steel, iron with powder coated and galvanized (color can be customized).
- Sliding arm material available in glass or acrylic.
- Lights and infrared sensors can be added.
- LED colors can be customized.
- Swipe card icon can be cancelled.
- Customized 3D drawings are available based on the site photos.
- OEM&ODM service is available.

OPTIONAL ACCESSORIES



Mounting Base

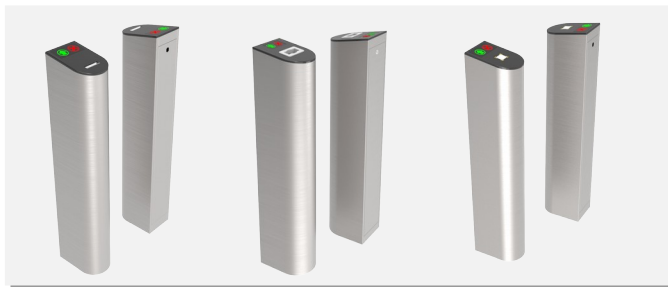
Optional:

1. Mounting base (for above floor wiring) ;
2. Removable base with wheels (for temporary events);
3. 201 stainless steel with anti-slip texture;
4. Iron with black powder coated.

Barrier

Optional:

1. Acrylic barrier (Logo can be printed);
2. Stainless steel tube barrier;
3. 304/316 stainless steel;
4. Iron with black powder coated.



Pillar

Optional:

1. Card collector pillar;
2. Wristband collector pillar;
3. QR code scanner pillar.

Control Panel

Buttons:

- Right/Left open
- Right/Left lock
- Right/Left free passage
- Emergency



ACCESS CONTROL SYSTEM

Our gates come with relay signals and RS485/RS232 interfaces. You can use your own access control system, or we can provide a complete access control system to you.





CartPoland Sp. z o.o. | ul. Olszowa 5
05-300 Mińsk Mazowiecki | NIP 8222399544