

SWING GATE GATE-STE

Mechanical Gate-STE with electromagnetic lock is effective entrance solution to control one-way pedestrian traffic. Telescopic tubular leaf can be up to 1000 mm wide that makes it ideal for a site where entrance space is not indicated.

The gate is equipped with electromagnetic lock that blocks gate in closed position. To enter in the access permied direction you have to push the gate. Once the passage is complete, the leaf automatically returns by spring closer to the start position.

Fail-safe operation (free open upon power loss) makes this gate possible to use as an emergency exit. Gate-STE is operated by the remote control panel (included in standard set). Gate-STE can be integrated with any access control system if required.



UNIQUE TELESCOPIC ADJUSTABLE LEAF

ALLOWS TO FIT THE GATE TO ANY PASSAGE

 **700-1050**
mm
PASSAGE WIDTH

 **IP 41-54***
PROTECTIVE LEVEL

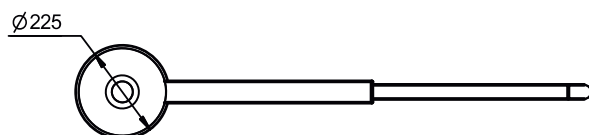
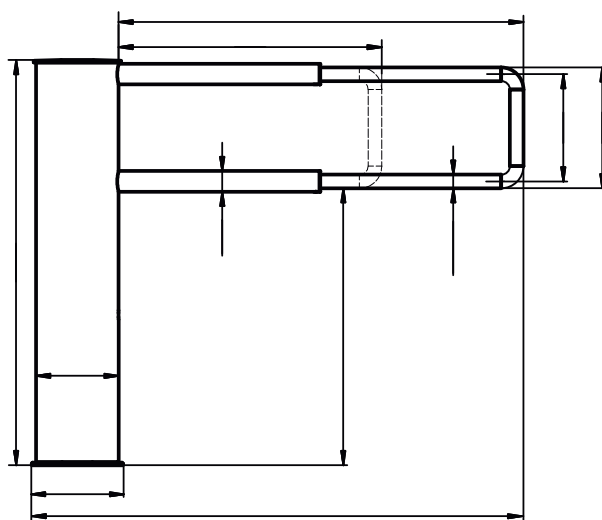
 **PASSAGE FOR DISABLED**

ADVANTAGES

- Easy installation
- Available in CW and CCW (right or left) opening
- Closing spring
- Remote control panel included in standard set
- Any access control system can be integrated
- Mechanical swing gate with electromagnetic lock that blocks gate in closed position
- Adjustable tube makes GATE-STE appropriate for areas where passage width is unknown in advance
- Solution for disabled and trolley access
- Appropriate addition to other CartPoland turnstiles
- Steadfast housing suitable for high traffic areas
- Can be mounted on a mobile platform CartPoland

* first figure is standard, all other available upon request.

| TECHNICAL SPECIFICATIONS | |
|--------------------------|--------------------------------------|
| Passage width, mm | 700-1050 |
| Unit width, mm | 865-1215 |
| Unit diameter, mm | 225 |
| Unit height, mm | 1000 |
| Mechanism | Mechanical with electromagnetic lock |



ELECTRICAL SPECIFICATIONS:

- Voltage:
 - from the AC (100-240)V, 50/60Hz
 - from a DC source 12 V
- Maximum power consumption
60 W per pass

MATERIAL:

| | |
|-------------------|--|
| Standard housing | Brushed SS AISI 304 |
| Available housing | Brushed SS AISI 316 Polished SS AISI 304 Polished SS AISI 316 Powder coated RAL |

MATERIAL:

- Governmental Institutions
- Military Bases
- Nuclear Power Plants
- Production sites (Industrial Plants)
- Commercial areas
- Financial institutions
- Airport Premises
- Business (Office) Centers
- Hotels
- Sport Complexes
- Recreation areas
- Urban areas
- Education Institutions
- others