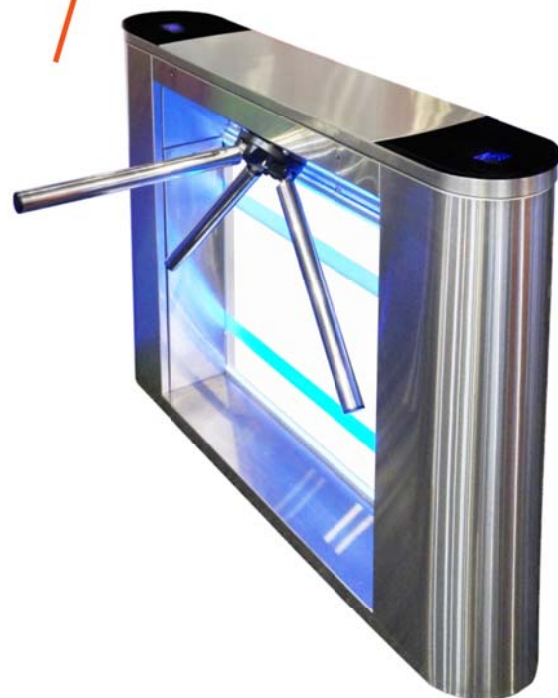


TRIPOD TURNSTILE GALAXY - M

Our Galaxy turnstile is a new model in our tripod series.

A combination of the functional Twix and stylish Sweeper, Galaxy offers the best of both worlds. It's contemporary designed cabinet is a unique solution. The Housing is offered in polished or brushed stainless steel, or as powder coated.

The transparent glass is framed by high strength steel. The Glass is equipped with LED indicators that can change color depending on the entrance functionality. The Galaxy Turnstile top incorporates the bracket for card reader and integrated LED module. Designers can take advantage of the ability to change the top design material on request.



STAINLESS STEEL HOUSING AND GLASS WITH LIGHTS
- RECIPE OF SUCCESS FOR ANY INTERIOR



60
pers/min
FREE ACCESS



25
pers/min
CROSSING CAPACITY



600
mm
PASSAGE WIDTH



41-54
PROTECTIVE LEVEL



DROP-ARM



MOTORIZED



BI-DIRECTIONAL

Advantages

- Bi-direconal motorized tripod turnstile with drop-arm function
- Successful combination offering high quality at an affordable price
- Glass mounted LED indicators change color on the entrance mode (e.g Red/Alarm, Green/Passage).
- Stable and Robust housing suitable for high traffic areas
- Can be integrated with any type of access control system
- Low power consumption
- Anti -panic function with automatic return to the starting position
- Whisper quiet, low noise operation
- Turnstile housing can be adapted for both indoor and outdoor installations
- Integrated RFID reader bracket under top glass
- Can be mounted on the Frame M mobile platform

Standard

- 2 types of LED indication
- Wired remote controller
- Supply of backup battery power connection
- Anti -panic functionwith automatic reset

Opons

- Any additional devices upon request (e.g. passage counter, RFID/Proximity/BioMetric readers, coin acceptor, push buon, barcode and QR-code reader)
- Heating function for external installation (for cold climates)
- Electronic module that provides automatic anti-panic funcon upon power failure
- Tripod Twin modifica on is available
- Dummy housings can be mounted adjacent to tripod turnstile

* first figure is standard, all other available upon request.

Technical Specifications:

| | |
|-----------------------|-----------|
| Unit width, mm | 745 |
| Unit length, mm | 1314 |
| Unit height, mm | 1000 |
| Weight, kg (not more) | 90 |
| Mechanism | Motorized |

Controlled by:



access control system;



manual control

When power goes OFF both directions are free.

Electrical Specifications:

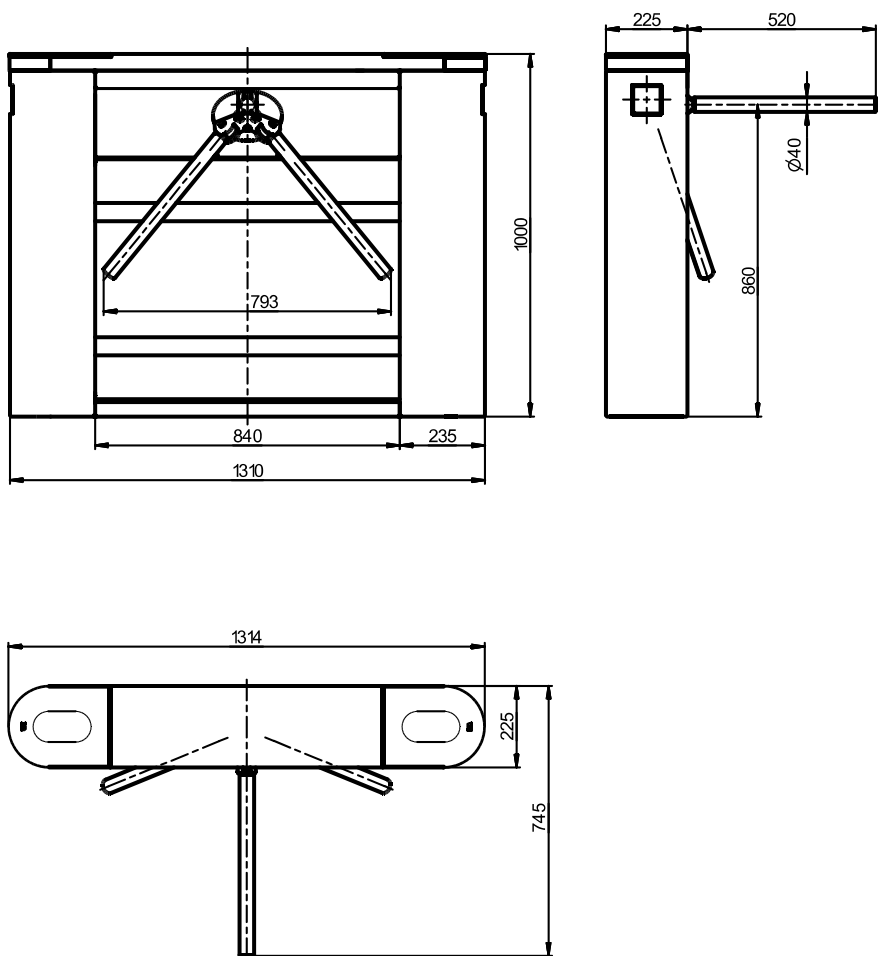
- Voltage:
 - from the AC (100-240)V, 50/60Hz;
 - from a DC source 12 V;
- Maximum power consumption 55W per pass;

Materials

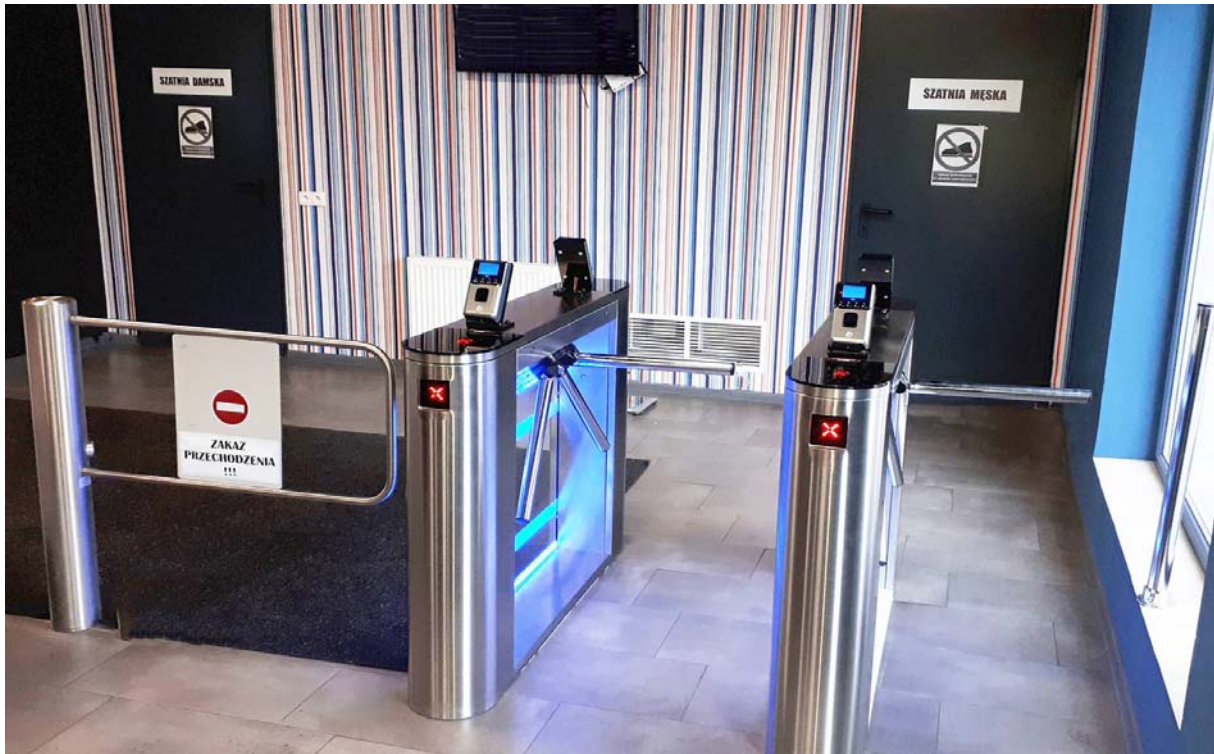
| | |
|-------------------|--|
| Standard housing | Standard housing |
| Available housing | Brushed SS AISI 316 Polished SS AISI 304 Polished SS AISI 316 Powder coated RAL |
| Tripod hub | Cast aluminum with painted grey finishing |

Install on areas:

- Governmental Institutions
- Military Bases
- Nuclear Power Plants
- Production sites (Industrial Plants)
- Commercial areas
- Financial institutions
- Airport Premises
- Business (Office) Centers
- Hotels
- Sport Complexes
- Recreation areas
- Urban areas
- Education Institutions
- others



TRIPOD TURNSTILE GALAXY - M



TRIPOD TURNSTILE GALAXY - M

